

ELITE RED ANGUS GENETICS

# WESTERN HERITAGE

On The Hill

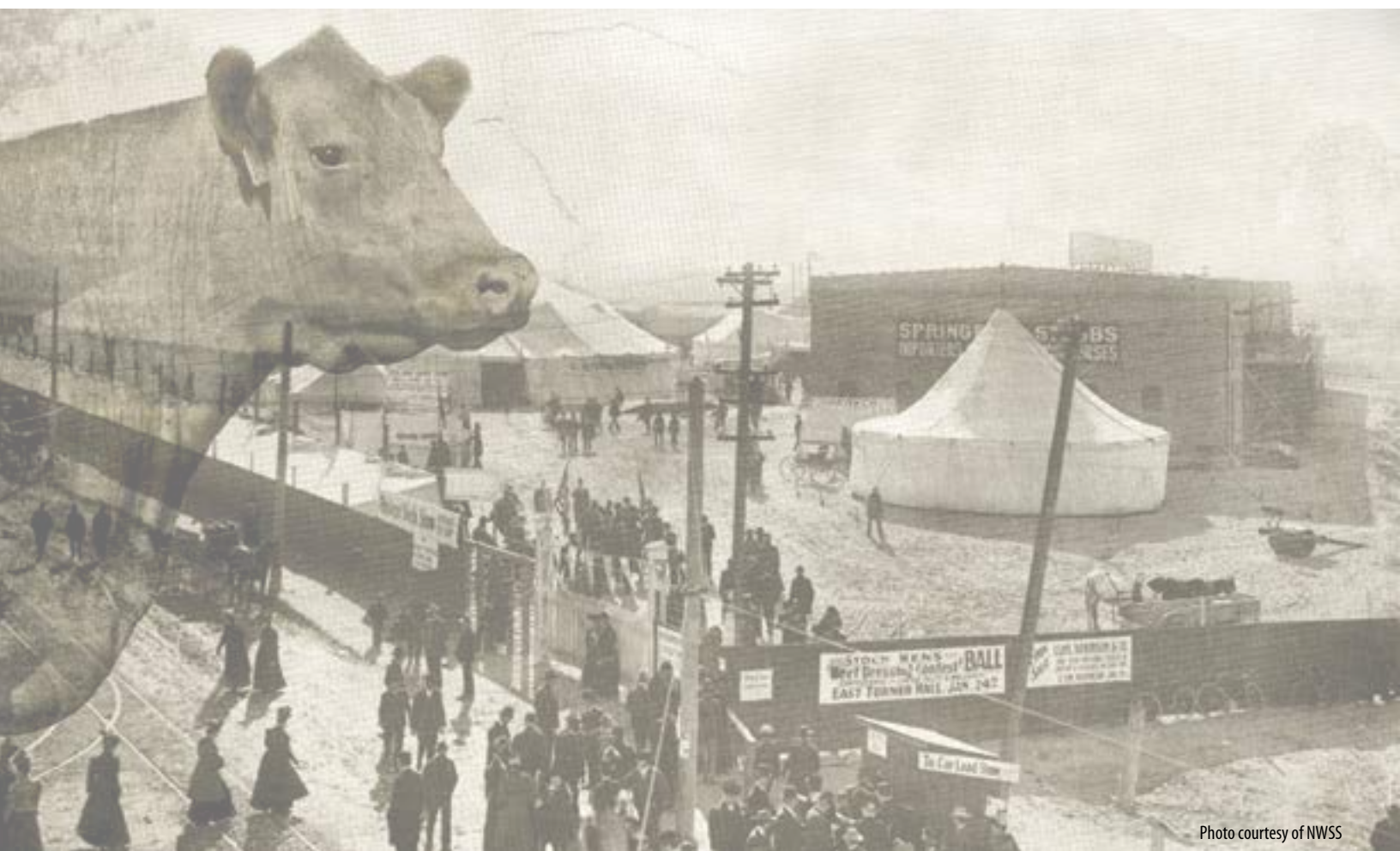


Photo courtesy of NWSS

JANUARY 6, 2018  
NWSS NATIONAL WESTERN CLUB  
DENVER, COLORADO. 4:30 P.M. MST

SELLING 34 ELITE RED ANGUS LOTS



# Contributors..

## **ARROWSMITH RED ANGUS**

Bassett, Nebraska  
Brad Arrowsmith 402.684.2539

## **BLAIRS.AG CATTLE COMPANY**

Lanigan, Saskatchewan  
Kevin Blair 306.365.7922  
Blake MacMillan 306.528.7484  
Kent McCune 817.602.8629

## **C-BAR RANCH**

Brownell, Kansas  
Steve Meyer 785.623.9736

## **CLOUD NINE CATTLE CO.**

Emerald, Wisconsin  
Ennis Wallace 731.415.4299

## **COCKBURN RED ANGUS**

Briercrest, Saskatchewan  
Ward Cockburn 306.631.9490

## **EAGLE PASS RANCH**

Ree Heights, South Dakota  
A.J. Munger 605.521.4468  
Andy LeDoux 785.527.3188

## **ENGLEWOOD FARMS**

Lancaster, Kentucky  
John Tobe 859.621.4411  
Sam Lawson 859.583.6933

## **GLENDENNING J BAR J RANCH**

Lebanon, Missouri  
Jack Glendenning 417.588.6121

## **J6 FARMS**

Gibbon, Nebraska  
David Spencer 308.627.6259

## **JC RANCH**

Gordon, Arkansas  
817.602.8629

## **MAJESTIC MEADOWS**

West Friendship, Maryland  
Mark Moxley 443.250.9932

## **NIORARA RED ANGUS**

Niobrara, Nebraska  
Jeff Keller 402.430.1227

## **OVERMILLER RED ANGUS**

Smith Center, Kansas  
Kelly Overmiller 785.282.1182

## **PARADEIS CATTLE CO.**

Sarcoxis, Missouri  
Derek Paradeis 417.388.7181

## **POLZIN CATTLE**

Darwin, Minnesota  
Chris Polzin 612.916.0105

## **RICH RED ANGUS**

Vinton, Iowa  
Kurt Rich 319.981.1506  
Nick Rich 319.721.7602  
Christian Rich 641.629.1724

## **RHODES RED ANGUS RANCH**

Faulkton, South Dakota  
Jordan Rhodes 605.228.9301

## **RUST MOUNTAIN VIEW RANCH**

Mercer, North Dakota  
Josh Rust 701.391.9769

## **SATTERFIELD ANGUS**

Norfolk, Arkansas  
Mark Satterfield 501.944.9274

## **SIX MILE RANCH**

Fir Mountain, Saskatchewan  
Clayton Gibson 306.642.8013  
Sebastian Stewart 250.423.1357  
Tyson Hertz 403.376.7284

## **T5 CATTLE CO.**

Taylorsville, Mississippi  
Tolar Family 601.422.3350

## **TIMBER CREEK RANCH**

Marrieta, Oklahoma  
Thomas Glascock 940.736.7706

## **THOMAS RANCH**

Harrold, South Dakota  
Troy Thomas 605.973.2448

## **TWIN WILLOW FARMS**

Springfield, Missouri  
Bud Thomas 417.861.6338

## **VF RED ANGUS**

Terrebonne, Oregon  
Everett Flikkema 406.580.2186

## **KIP WALLACE**

Emerald, Wisconsin  
731.415.3685

## **WEBER LAND & CATTLE**

Lake Benton, Minnesota  
Jesse Weber 507.530.5427

## RED ANGUS ASSOCIATION OF AMERICA

Tom Brink, CEO

### Board of Directors

President, Bob Morton, Montana

1st Vice President, Kevin Miller, Colorado

2nd Vice President, Kyle DeVoe, Texas

Sam Lorenzen, Oregon, Area I - West

Bruce Ketchum, Montana, Area II - Montana

Steve Koester, North Dakota, Area V - Northern Plains

Newley Hutchison, Oklahoma, Area VI - Great Plains

John Langdon, North Carolina, Area VII - Northeast

Raymond Prescott, South Carolina, Area VIII - Southeast

Stuart Gilbert, Iowa, Area IX - Midwest

Chuck Feddes, Montana, Region A

Connie Mushrush, Kansas, Region B

Johnny Rogers, North Carolina, Region C

## CANADIAN ANGUS ASSOCIATION

Rob Smith, CEO

### Board of Directors

President, Brett Wildman, Alberta

Past President, David Sibbald, Alberta

President Elect, Trevor Welch, New Brunswick

Lorraine Sanford, British Columbia

Bob Hahn, Alberta

George Baxter, Alberta

Tracey Willms, Saskatchewan

Dave Johnson, Saskatchewan

Dale Easton, Saskatchewan

Shawn Birmingham, Manitoba

Graham McLean, Ontario

Ryan Currie, Quebec

## 2018 NATIONAL WESTERN RED ANGUS SHOW SCHEDULE...

SATURDAY, JANUARY 6, 2018

8:00 A.M. ... RED ANGUS JUNIOR SHOW

SUNDAY, JANUARY 7, 2018

10:00 A.M. ... RED ANGUS PEN SHOW

MONDAY, JANUARY 8, 2018

9:00 A.M. ... RED ANGUS OPEN SHOW

## SALE MANAGEMENT



### SEEDSTOCK CONSULTANTS SPECIALIZED SALES

612 W. Franklin St., Ste. 12A, Richmond, VA 23220

Keith Kisse | Cell: 817/821-6263

Ph: 804/353-2220 | Fax: 804/353-2221

kkseedstock@comcast.net | www.kkseedstock.com

## LOCATION...

### NATIONAL WESTERN CLUB

#### ON THE HILL

The National Western Club is located in the Hall of Education Building, just upstairs from the Beef Palace Auction Arena.

## SALE SCHEDULE...

SATURDAY, JANUARY 6, 2018

4:00 P.M. ... THE NATIONAL WESTERN CLUB DOORS SWING WIDE  
OPEN BAR & HORS D'OEUVRES

4:30 P.M. ... WESTERN HERITAGE AUCTION

## AUCTIONEER

Steve Bonham 405.823.2972

## RING STAFF

Troy Applehans 303.886.0775

Alan Sears 970.396.7521

Kent Jaecke 405.408.2440

Ryan Denton 918.629.3004

## MARKETING AGENT

Seth Leachman 406.591.5651

## INTERNATIONAL MARKETING AGENT

Pat Simmons 336.287.4950

## ANNOUNCEMENTS

Announcements at the sale by the owners, auctioneer or sale management will take precedence over statements in the catalog.

## EPD INFORMATION

Please note the EPDs may change from the time the catalog is printed until the registration papers are transferred.

LiveAuctions.TV

To register and follow the auction in real time on the internet, log on to [www.liveauctions.tv](http://www.liveauctions.tv). For More Information, call Brad Fahrmeier at 816.392.9241.

If you wish to follow the sale on the computer and bid by telephone, please call the sale-day phone numbers or one of the staff members listed in our catalog.

*"We appreciate your attendance"*





1

## TWG TANGO 156D

2/11/2016 • 3534904 • CAT: A • BULL

OWNED BY: TIMBER CREEK RANCH • THOMAS RANCH • RUST MOUNTAIN VIEW RANCH

HB	GM	CD	BW	WW	YW	MK	HPG	CM	MB	YG	CW	RE
73	48	3	-0.5	60	88	11	9	5	0.33	0.01	21	0.01

RED RINGSTEAD KARGO 107M

**RED RINGSTEAD KARGO 215U**

RED RINGSTEAD MS EQUAL 589P

RED 6 MILE FULL THROTTLE171T

**DAMAR THORA Y156**

DFRA LANA 113

RED COMPASS KARGO 83K

RED GET-A-LONG MRS. YOUNG 09

RED SSS YUKON 440K

RED SSS MISS EQUAL 495G

RD TER-RON FULLY LOADED 540R

RED SIX MILE WITZEL 360J

BJR MONU 4X-303

BJR LANA 968-481

*See Him on the Hill*

*Selling 25% Breeding Interest*

**2017 Dixie National Livestock Show  
Grand Champion Bull**

**2017 State Fair of Texas Grand Champion Bull**

TWG Tango 156D is a powerful individual that combines all physical traits that merge harmoniously into one complete and total herd sire package. He is an awesome display of the breed's most expressive attributes that make him one of the unique bulls to be offered for sale this year. He is an uncommonly powerful Red Angus bull that offers much to an existing breeding herd. The muscle mass, body depth and fluidity of movement are hallmarks of the exceptionalness of this breeding bull.

Red Ringstead Kargo 215U has been a popular breeding bull, and he has been a part of the Blairs.Ag Cattle Co. genetic progress the last few years. He is a noted breeding bull that has added much genetic dimension to calf crops year after year, and his progeny have been competitive in the show ring and valuable as breeding stock in countless herds throughout North America. His top sons are in strong demand for sire selection in the breed's best breeding herds.

The dam of this breeding bull is a hard working female at Timber Creek Ranch. She has been a consistent producer of performance and quality, and TWG Tango is her most noted accomplishment to date. With this lot, the three co-owners are sharing a bit of their future with the successful bidder on January 6.



**RED RINGSTEAD KARGO 215U**

Sire of Lot 1



**TWG TANGO 156D**

Grand Champion 2017 State Fair of Texas



# HERD SIRE



**See Him on the Hill**

**Selling 50% Interest and Full Possession  
after Show Career**

**Undeafed in Class and Division in 2017  
2017 NAILE Reserve Grand Champion Bull**

This young herd sire is a dynamic individual that is proving to be a consistent and powerful force in his young show career, and he is from one of the most proven and time-honored cow families and genetic combinations within the gene pool of the Red Angus breed in North America. The intensified genetics that are combined into this excellent individual are offered through the Western Heritage Sale. The dark red and impressively designed future herd sire has his life in front of him and can make an unmistakable positive impact upon the entire Red Angus breed.

He is a direct descendant of the legendary Damar Mimi W085, the ever-popular and respected donor matron of the breed. Mimi is recognized as the female that produces progeny with extraordinary potential and breed merit when mated with any sire. Her daughters have made marvelous breeding females and her sons are a source of consistency of performance, efficiency and breed character. Breeding value perfectness is attained through this maternal giant of the industry.

Andras Fusion R236 is one of the noted sires in the industry. His influence is making a vital impact on the business, and his progeny have been met with spirited bidding at auction. Balanced trait selection is the hallmark of the entire genetic line, and this sire is adding progeny to the herd book that move the efficiency of the herd book to an even greater level of industry acceptance.

Selling here is a tremendous herd sire opportunity that will make a viable impact on the industry for years to come.

## 2 DAMAR MIMI E381

1/29/2017 • 3622963 • CAT: A • BULL

OWNED BY: KIP WALLACE • C-BAR RANCH

HB	GM	CD	BW	WW	YW	MK	HPG	CM	MB	YG	CW	RE
138	52	11	-2.5	50	86	21	15	6	0.76	-0.03	18	0.12

ANDRAS IN FOCUS B175

**ANDRAS FUSION R236**

ANDRAS BELLE B167

RED FINE LINE MULBERRY 26P

**DAMAR MIMI W085**

DFRA TARMILY N512

MYTTY IN FOCUS

DI ESTONIA 316

ANDRAS THUNDER B105

ANDRAS BELLE 416

RED COMPASS MULBERRY 449M

RED DUS FAYETTE 8G

BIEBER MAKE MIMI 7249

DFRA TARMILY N305



**DAMAR MIMI W085**

Dam of Lot 2

**DAMAR BARCELONA E067**

Full sib to Lot 2, Sells as Lot 13





## 3 TWF SAGA 613D

4/18/2016 • 3704129 • CAT: A • BULL  
OWNED BY: TWIN WILLOW FARMS

HB	GM	CD	BW	WW	YW	MK	HPG	CM	MB	YG	CW	RE
90	47	0	2.3	63	96	17	9	6	0.33	0.09	31	0.06

RED NORTHLINE FAT TONY 605U

**PZC TMAS RED ZONE 2795**

WHITSTONE LANA V150

3R 2595 HOB0 133G

**3R MS TOUCH 51H 21M**

3R MS TOUCH 143F 51H

RED SVR GANGSTER 14S

RED NORTHLINE RUBY 0305N

PERKS ADVANCER 9088

WSRA LANA P070

BUF CRK HOB0 259S

3R ICE WOMAN 118Z 58C

BUF CRK HOB0 1961

MS FASHION TOUCH 143F

*See Him on the Hill*

**Grand Champion Bull 2017 Ozark Empire Fair**  
**Grand Champion Bull 2017 Missouri State Fair**  
**Reserve Grand Champion Bull 2017 Tulsa State Fair**

TWF Saga 613D has been a tremendous individual in the Twin Willow Farms show string. He is from the strongest maternal lines in place in the Twin Willow breeding program. Both sire and dam of this herd sire have become well documented sources of some of the most appreciated and highly acclaimed genetics in North America. He is genetically derived from the exceptional Ms Touch line of females that continue to make new and exciting contributions to the Twin Willow Farms' breeding program.

PZC TMAS Red Zone 2795 has become one of the great sources of performance Red Angus seedstock. Countless individuals in the breed are descendants of this great breeding bull. His daughters are excellent milking females, and the multi-trait improvement is obvious when his influence is in the pedigree.

3R Ms Touch 51H 21M is the grand matron in the Twin Willow Farms' breeding program. The daughters and granddaughters of this female make a large portion of the cow herd. They have impacted the herd and both sons and daughters have become successful in the show ring, and even more victorious in the breeding pasture.

TWF Saga 613D sells in his entirety.



**PZC TMAS RED ZONE 2795**

Sire of Lot 3



**3R MS TOUCH 51H 21M**

Dam of Lot 3





## See Him on the Hill

Reform is a bull that has caused a stir in the industry. He combines impeccable muscle shape, flawless skeletal design and strong maternal heritage with a solid EPD profile. Reform began as the high-selling bull in the Weber Land & Cattle Co spring sale bringing \$50,000 for a half interest. He has proven himself to be an athletic breeding bull in the pasture, covering females with ease. His presence in the show ring has brought him accolades by many respected stockmen. Reform is the reigning Grand Champion Red Angus Bull at Agribition 2017 and was named the Canadian National Reserve Champion Bull as well.

This will be the only opportunity to purchase semen on this breed leading sire for the 2018 breeding season, with no further semen being offered until November 2018 at the earliest.

Owned by: VF Red Angus, OR; Six Mile Red Angus Ltd., SK and Weber Land & Cattle, MN



## 4 WEBER REFORM 618

2/2/2016 • 3535729 • CAT: A • BULL

OWNED BY: VF RED ANGUS • SIX MILE RANCH • WEBER LAND & CATTLE

HB	GM	CD	BW	WW	YW	MK	HPG	CM	MB	YG	CW	RE
102	50	5	0.3	69	109	23	12	1	0.45	0.08	35	0.52

BIEBER ROOSEVELT W384  
**BIEBER ROLLIN DEEP Y118**  
 BIEBER TILLY 399W

BJF 602S  
**BJF LANA'S EQUAL 8021U**  
 SBCC EQUAL LAND

BIEBER ROUGH RIDER 10712  
 BIEBER SHEBA 9602  
 BIEBER BOONE 8000  
 BIEBER TILLY 303S  
 BJF TOP GUN 403P  
 SUNRISE DESIGN  
 LCHMN NO EQUAL 1174D  
 674

4A 10 UNITS OF SEMEN

4B 10 UNITS OF SEMEN

4C 10 UNITS OF SEMEN

4D 10 UNITS OF SEMEN

4E 10 UNITS OF SEMEN



WEBER REFORM 618 • Grand Champion 2017 Agribition



# DONOR FEMALE



## 5 WSF MS YANKEE 13T 12W

1/20/2009 • 1296717 • CAT: A • COW  
OWNED BY: BLAIRS.AG CATTLE COMPANY

HB	GM	CD	BW	WW	YW	MK	HPG	CM	MB	YG	CW	RE
86	47	1	0.9	56	84	20	15	7	0.31	0.11	21	-0.19

RED NORTHLINE ROB ROY 122K  
**RED BRYLOR/WSP KARWEIK**  
RED DMM MISS ESSENCE 58M

RED FINE LINE MULBERRY 26P  
**FINE LINE YANKEE 13T**  
RED FINE LINE YANKEE 14R

RED WILD ROSE ROBINHOOD 11F  
RED BAR EL SYBIL 122E  
RED BRYLOR DYNASTAR 19S  
RED STEN ESSENCE 42G  
RED COMPASS MULBERRY 449M  
RED DUS FAYETTE 8G  
RED SSS EQUAL 508N  
RED T-S YANKEE 303M



WSF MS YANKEE 13T 12W

Due February 21, 2018 to KJHT Power Take Off, the 2016 NAILE Reserve Grand Champion Bull.

Red WSF Ms Yankee 13T 12W is one of the most significant sources of Red Angus breed improving genetics in North America. The grand matron donor female has been responsible for shaping and catapulting quality, efficiency, consistency and uniformly noted phenotype of Red Angus seedstock. This mature female continues to maintain her body composition, fluidity of movement, super-ovulation of embryo consistency, fertility of conception from artificial insemination and natural mating and ability to produce the most essential breeding stock recorded in the herd books in Canada and the United States.

Red WSF Ms Yankee 13T 12W has been a part of the Blairs. Ag Cattle Co. since her earliest donor female career. She has been an overpowering force within the Red Angus donor arsenal at Blairs. Ag Cattle Co., and she stands alone as the most efficient female for embryo production and numbers as well as quality of progeny that have been born into the Blair breeding program. Furthermore, her influence is now recognized globally through embryos that have been purchased by leading breeders throughout the world. Her influence has been highly sought by breeders in many foreign countries, and her progeny are contributing to several breed association herd books worldwide.

Red WSF Ms Yankee 13T 12W is one of the most efficient producers of high quality embryos in the industry. She has been flushed 24 times and has averaged 10.5 embryos per flush. She is an efficient producing machine of the highest quality embryos of the highest quality progeny obtainable in the industry today.



# WSF MS YANKEE 13T 12W PROGENY



**RED BLAIRS SWEET CHEEKS 8Y**  
\$18,000 Daughter



**RED BLAIR'S YANKEE 28B**  
\$7,000 Daughter



**RED BLAIRS YANKEE 36Z**  
2012 High-Selling Daughter



**RED BLAIR'S YANKEE 61B**  
Champion Cow-Calf Pair, National Junior Heifer Show, Daughter



**RED BLAIR'S BINGO 581B**  
\$60,000 Son



**RED BLAIR'S KONGO 580D**  
\$37,500 Son



# BRED HEIFER



## 6 DAMAR OH ME BABY D031

1/7/2016 • 3554689 • CAT: A • COW  
OWNED BY: KIP WALLACE

HB	GM	CD	BW	WW	YW	MK	HPG	CM	MB	YG	CW	RE
124	51	1	-1.2	70	112	23	14	5	0.31	-0.03	35	0.40

LJC MISSION STATEMENT P27  
**SILVEIRAS MISSION NEXUS 1378**  
SILVEIRAS DAORV 8399

RED FINE LINE MULBERRY 26P  
**DAMAR OH BABY W168**  
RED T-S OLIVIA 706P

LJC LANCER 806  
LJC HANNAH 106  
TROTTERS ROMEO 412  
MOORE'S DAORV 5365  
RED COMPASS MULBERRY 449M  
RED DUS FAYETTE 8G  
RED BRYLOR BODASIUS 79K  
RED T-S OLIVIA 256L

**See Her on the Hill**  
**Selling 50% interest**

**2017 NAJRAE Reserve Grand Champion Futurity Female**  
**2017 NAJRAE Grand Champion Owned Female**  
**2017 National Junior Heifer Show**  
**Reserve Grand Champion Female**  
**2017 NAILE Junior and Open Show**  
**Reserve Grand Champion Female**

AI'd June 1, 2017 to C-Bar Evolution, safe in calf

Damar Oh Me Baby D031 is one of the most accomplished and appreciated Red Angus females born in the 2016 calendar year. She and her brother are members of an extraordinarily successful embryo flush from two of the breed's most noteworthy individuals, and they resulted in both Reserve Grand Champions at the 2017 NAILE. Perhaps the sire and dam of this beautiful female that sells as Lot 6 are among the most elite breeding individuals in the industry.

This many times champion female is a perfect blend of today's most celebrated genetics. Her sire, Silveiras Mission Nexus 1378, is one of the most heavily used breeding sires today. His progeny are among the most popular young cattle in breeder's calf crops. His females are making great cows, and they are making an impact upon the commercial and purebred sector, alike. Damar Oh Baby W168 is the dam of the exceedingly popular Damar Trump C512, the 2016 NAILE Grand Champion Bull and 2017 NWSS Grand Champion Bull. Astonishing consistency, breed leadership and accomplishments are obtained within the blood of the donor dam.

This young female ranks in the top 20% of the breed in five different EPD traits.



**DAMAR TRUMP**  
Maternal brother to Lot 6

**DAMAR OH ME BABY D031**







## See Her on the Hill

AI'd May 9, 2017 to Red Blair's Bingo 581B, safe in calf

TWF Baneberry 632D is a powerful breeding piece from the Twin Willow Farms program. This highly maternal pedigree and genetic combination represents the kind of quality and breed advancement that is made available through this sale offering from the Twin Willow Farms organization. This bred female represents the most advanced version of the Red Soo Line Baneberry 5238 cow family. This combination of proven and respected lineage has resulted in this spectacular female that is offered through the Western Heritage Sale.

WPRA Legacy A-314 has become a noted breeding sire of outcross maternal merit coupled with multiple trait leading EPD balance and consistency. His influence on the breed has become a significant contribution to the betterment of the business through both genotype and phenotype.

Red Soo Line Baneberry 5238 is an undeniable catalyst for the Red Angus business. Through her genetic contribution to the entire gene pool, noted individuals, both sons and daughters, have emerged as sources of consistent measures of performance and carcass merit. Her daughter that sells in this offering is one of her very best accomplishments, and TWF Baneberry 632D is offered as a significant young female to carry forth the Baneberry female line for years and years to come.



## TWF BANEBERRY 632D

5/3/2016 • 3704127 • CAT: A • COW  
OWNED BY: TWIN WILLOW FARMS

HB	GM	CD	BW	WW	YW	MK	HPG	CM	MB	YG	CW	RE
80	48	3	-0.1	57	80	21	12	0	0.50	-0.05	17	0.10

RED LAZY MC EYE SPY 64Y

**WPRA LEGACY A-314**

WPRA EVERLEDA ENTENSE 610

RED CRESCENT CREEK FRCHIEF 7

**RED SOO LINE BANEBERRY 5238**

RED SOO MS BANEBERRY 3193

LAZY MC LOOKOUT 37U

RED LAZY MC GOLD DESIGN 68U

BFCK CHEROKEE CNYN 4912

ER EVERLEDA ENTENSE P578

FORSTER CHIEF 7182ET

RED CRESCENT CREEK DUCHESS 1

BASIN SENSATION 702E

RED SIX MILE BANEBERRY 362J



**RED SOO LINE BANEBERRY 5238**

Dam of Lot 7

**WPRA LEGACY A-314**

Sire of Lot 7





## 8 AA ANGELIQUE 1100C

11/1/2015 • 3524746 • CAT: 2 • COW  
OWNED BY: PARADEIS CATTLE COMPANY

HB	GM	CD	BW	WW	YW	MK	HPG	CM	MB	YG	CW	RE
100	48	3	-0.6	47	71	10	8	-1	0.44	-0.05	12	0.11

LJC MISSION STATEMENT P27

**RED U2 MISSION 61W**

RED U-2 STORMY 205M

RED KBJ KNIGHT 17J

**RED GEIS LOIS 166'05**

RED GEIS LOIS 157'01

LJC LANCER 806

LJC HANNAH 106

RED U-2 WANTED: 917J

RED U-2 STORMY 936J

RED YY RED KNIGHT 640F

KBJ ROUND LASSIE 18T

RED GEIS POUND MAKER 22'96

RED KC LOIS 48S

### See Her in the Yards

AI'd April 21, 2017 to JYJ Redemption Y1334, safe in calf

AA Angelique 1100C is a brilliant young female from the Paradeis Cattle Co., and the very best from the operation is offered for sale as a feature though the Western Heritage Sale. The pedigree derivation needs no introduction to the industry, for she is a version of the excellence that has been generated from the Lois family.

AA Angelique 1100C is one of the elite members of the female portion of the Western Heritage Sale inventory. The daughter of Red U2 Mission 61W from Geis Lois 166R is a remarkable individual from the entire illustrious line. The cow family represented in the pedigree of this bred female is one of the greatest breeding cow families of all times. From this diverse family lineage, two Canadian Red Round Up sale toppers have been direct daughters of the great foundation donor female. Years of selection pressure and selective breeding have been invested in the phenotype and genotype of the bred heifer selling here.

The rarefied and celebrated genetics that help define this female are well documented throughout the breed.



**RED GEIS LOIS 166'05**

Dam of Lot 8



**RED RAINBOW LOIS 7U**

Maternal sister to Lot 8



# OPEN HEIFER



## See Her on the Hill

This exciting heifer calf represents the most advanced genetic combination of the GT Cita 4060 family lineage. This family tree engages all breeders to ponder the genetic reach and diversity that lies within the DNA fiber of this phenomenal family line. GT Cita 4060 topped the recent Weidenbach Dispersal when 50% of the female sold for \$50,000. Furthermore, WCR Cita 5098C, the dam of the heifer calf selling here, attained one of the most impressive show records last year.

**2016 NAILE Grand Champion Female**

**2017 NWSS Grand Champion Female Junior show**

**2017 FWSS Grand Champion Female**

WCR Cita 5098C, from GT Cita 4060, by Red Soo Line Power Eye 161X, was not only an impressive and perfectly constructed show heifer, but today, she has emerged as one of the most efficient and fertile of the young Blair.Ag Red Angus donor females. She, in turn, by evidence of her first calf, has become one of the absolute best daughters of the great foundation female that started the GT Cita 4060 phenomenon.

This is the first public offering of progeny sired by the junior herd sire, Tommy Jack. He has fulfilled all expectations and beyond.

This June-born female is an exciting heifer calf that promises to carry on the excellent legacy she has inherited from both her dam and grand dam.

## 9 RED BLAIR'S J6 JC CITA 860E

6/1/2017 • 3795126 • CAT: A • COW

OWNED BY: BLAIRS AG CATTLE COMPANY • J6 FARMS • JC RANCH

HB	GM	CD	BW	WW	YW	MK	HPG	CM	MB	YG	CW	RE
85	48	2	-0.6	56	91	15	10	5	0.28	0.10	24	-0.12

SIX MILE GAME FACE 164Y

**TWG TOMMY JACK 166A**

DAMAR PASSION X166

RED SOO LINE POWER EYE 161X

**WCR CITA 5098C**

GT CITA 4060

VGW GAME PLAN 816

RED SIX MILE LAKOTO 35W

RED FINE LINE MULBERRY 26P

DFRA JOPLIN 501L

RED COCKBURN RIBEYE 308U

RED TR LYNN 301R

CITATION 138

JMDF MISS LANA



**TWG TOMMY JACK 166A**

Sire of Lot 9



**WCR CITA 5098C**

Dam of Lot 9





## 10 EGL DUCHESS E824

4/5/2017 • 3750393 • CAT: A • COW  
OWNED BY: EAGLE PASS RANCH

HB	GM	CD	BW	WW	YW	MK	HPG	CM	MB	YG	CW	RE
101	48	3	-0.6	63	95	21	12	8	0.20	0.03	26	-0.06

RED SIX MILE SAKIC 832S  
**PZC TMAS FIRESTORM 1800 ET**  
GT CITA 4060

PIE GET WESTERN 4061  
**AHL DUCHESS 42W**  
AHL DUCHESS 106P

RED SIX MILE AVIATOR 217P  
RED SIX MILE SIERA 257P  
CITATION 138  
JMDF MISS LANA  
PIE ATLANTIC 2204  
PIE M.S. CADSAM 8192  
LCC CHARITY A183M  
AHL DUCHESS MB019

### See Her on the Hill

EGL Duchess E824 is a fantastic heifer calf with an extraordinary genetic heritage and family line. The outstanding show heifer prospect is a full sister the AHL Flashback 446B, the 2014 NAILE Grand Champion Bull and popular breeding sire. This heifer calf represents the very best genetics from the entire Red Angus calf crop from Eagle Pass Ranch. The breeding consistency and elevated performance of this lineage have become one of the most important family lines recognized within the breed. The lines, symmetry, balance and breed character of the progeny of AHL Flashback 446B are exactly the same as can be found in EGL Duchess E824. The entire line is fail safe in perfected conformation, size and image.

The sire, PZC TMAS Firestorm 1800 ET, is the deceased sire of uncountable champions, sale toppers and breed leaders. He is the most noted son of GT Cita 4060, and his immense influence in the breed has obviously been impossible to quantify. The individuals from this cow family are perhaps some of the breeding sire's finest offspring.

AHL Duchess 42W is one-in-a-million Red Angus donor female. Her accomplishments and breeding value as a genetic contributor to the absolute top of the Red Angus breed is well-documented in the American Red Angus Association herd book. She is the product of decades of selective mating that has resulted into the genetic superiority that has produced some of the most breed-leading individuals known to the industry.



**AHL FLASHBACK 446B**  
Full brother to Lot 10



**AHL DUCHESS 42W**  
Dam of Lot 10



# OPEN HEIFER



*See Her on the Hill*

**Selling 100% possession and 100% flush rights.**

RRA Alaynah 329 7116 is a heifer with a great disposition that we offer with great pride. She is a red daughter out of the black-red carrier sire, RRA Aviator 502, who has done very well for those who have had the opportunity to use him. RRA Aviator 502 calves easy—so easy that when you see his calves at a young age you kind of wonder where the power and growth are. But after they are a few months old you forget all about that as you notice them come on and see what makes him a great young sire. RRA Alaynah 329 7116 is no exception. She is a powerful and athletic female while also having a very feminine and refined look to her. Her dam, TLC Alaynah 329, has accomplished a lot in her life; first in the show ring and now in the donor pen, making top quality females that get your attention. We are proud to offer this female out of the top of our replacement heifer pen.

## 11 RRA ALAYNAH 329 7116

2/3/2017 • 3625774 • CAT: A • COW  
OWNED BY: RICH RED ANGUS

HB	GM	CD	BW	WW	YW	MK	HPG	CM	MB	YG	CW	RE
42	50	2	-0.6	61	101	25	11	3	0.44	0.06	30	0.16

MUSGRAVE AVIATOR

**RRA AVIATOR 502**

RRA RACHEL 246 746

TLC CHERRY DR.

**TLC ALAYNAH 329**

TREE LANE MS LIGHTING 224X

KOUPALS B&B IDENTITY

MCATL FOREVER LADY 1429-138

UBAR GRAND CANYON 124

RRA RACHEL 246

WEBR DR'S. ORDERS

WSF MS DIONNE T7929

MAJESTIC LIGHTNING 717 SGMR

TPIE MS CANYON 2250



**RRA AVIATOR 502**

Sire of Lot 11

**TLC ALAYNAH 329**

Dam of Lot 11







## 12 TW BAHDA BING 700E

4/6/2017 • 3791781 • CAT: A • COW  
OWNED BY: TWIN WILLOW FARMS

HB	GM	CD	BW	WW	YW	MK	HPG	CM	MB	YG	CW	RE
82	47	2	0.2	54	77	17	10	3	0.28	0.03	16	-0.10

RED RINGSTEAD KARGO 215U  
**RED BLAIRS BINGO 581B**  
WSF MS YANKEE 13T 12W  
  
RED CRESCENT CREEK FRCHIEF 7  
**RED SOO LINE RHONDA 5109**  
RED GEIS RHODA 176'99

RED RINGSTEAD KARGO 107M  
RED RINGSTEAD MS EQUAL 589P  
RED BRYLOR/WSP KARWEIK  
FINE LINE YANKEE 13T  
FORSTER CHIEF 7182ET  
RED CRESCENT CREEK DUCHESS 1  
RED CR 17 PROOF 96G  
RED GEIS RHODA 35'93

### See Her on the Hill

TW Bahda Bing 700E is one of the early-born progeny of Red Blair's Bingo 581B, the senior herd sire for Twin Willow Farms. This heifer calf is a stand out from the entire Twin Willow Farms calf crop, and she is offered as another of the tremendous lots from the Bud Thomas breeding program.

This excellent show and donor prospect is a unique blend of the consistency of the Red Soo Line Rhonda 5109 family lineage and the freshness of pedigree of Red Blair's Bingo 581B. She is a complete and perfectly conformed female, from which both the sire and dam have become known.

Red Soo Line Rhonda 5109 is a foundation female owned by Rust Mountain View Ranch and Blairs.Ag Cattle Co. The mature donor female is the grand matron of the entire Rhonda cow family that has become a noted family tribe that expands in appreciation across the border of Canada and The United States. Three generations of individuals have been born from this great donor female.

Red Blair's Bingo 581B is one of the exciting herd sires in the breed presently. The son of Red Ringstead Kargo 215U and Red WSF Ms Yankee 13T 12W (Lot 5) will continue to make an increasingly significant impact upon the entire breed.

TW Bahda Bing 700E is a marvelous show heifer prospect from the progressive breeding program of Twin Willow Farms.

**RED BLAIRS BINGO 581B**  
Sire of Lot 12



**RED SOO LINE RHONDA 5109**  
Dam of Lot 12







**See Her on the Hill**

**Selling 50% Interest**

The heifer calf offered here from Cloud Nine Cattle Co. is a full sister to the great show bull and herd sire that sells as Lot 2. The heifer calf is offered as a competitive show heifer and future donor female that will offer influence from one of the noted cow families in the entire Red Angus breed, the Damar Mimi W085 cow line. Each and every genetic combination through embryo transplant culminated with outstanding results, and none more successful than the mating with Andras Fusion R236.

This heifer calf is offered as much more than a show heifer. She is a young individual that will make a big impact upon the future of any breeding program. The genetic worth of this female is a balance of EPD trait leading statistics with a perfectly constructed profile and phenotypic excellence. The heifer calf will display her genetic worthiness as time goes by and she spends many productive years in transplant.

Andras Fusion R236 has become one of the most popular breeding bulls in the industry. He stamped his progeny from Damar Mimi W085 with exceedingly completeness as evidenced by the two progeny that sell as Lots 2 and 13.

The progeny of Damar Mimi W085 are among the most highly sought within the Red Angus industry. The heifer calf that is offered here is one of the donor female's finest genetic achievements.

## 13 DAMAR BARCELONA E067

1/23/2017 • 3622961 • CAT: A • COW

OWNED BY: CLOUD NINE CATTLE CO.

HB	GM	CD	BW	WW	YW	MK	HPG	CM	MB	YG	CW	RE
138	52	11	-2.5	50	86	21	15	6	0.76	-0.03	18	0.12

ANDRAS IN FOCUS B175

**ANDRAS FUSION R236**

ANDRAS BELLE B167

RED FINE LINE MULBERRY 26P

**DAMAR MIMI W085**

DFRA TARMILY N512

MYTTY IN FOCUS

DI ESTONIA 316

ANDRAS THUNDER B105

ANDRAS BELLE 416

RED COMPASS MULBERRY 449M

RED DUS FAYETTE 8G

BIEBER MAKE MIMI 7249

DFRA TARMILY N305



**DAMAR MIMI W085**

Dam of Lot 13



**DAMAR MIMI E381**

Full sib to Lot 13, Sells as Lot 2

14A

# PICK OF BLAIRS.AG CATTLE CO. HEIFER CALVES

***Selling the Pick of One-Half Interest in the Blairs.Ag Cattle Co. Red Angus 2018 Heifer Calves OR Pick of One-Half Interest in the Blairs.Ag Cattle Co. Red Angus 2018 Bull Calves***

Double the hammer price for both one-half interest in the bull pick and one-half interest in the heifer pick.  
All solely owned 2018 heifer and bull calves are eligible for selection.  
More than 250 calves to select from.

**TERMS:**

Half purchase price due sale day. Remaining half purchase price due when selection is made

One of the Red Angus breed's largest and finest producers of elite seedstock is the Blairs.Ag Cattle Co. Red Angus program at Lanigan, Saskatchewan. Few breeders of any breed have made as significant of an impact on the beef business as has Blairs.Ag Cattle Co. The genetic base is both diverse and proven. With each and every calf crop, the herd has become even more impressive given the intense nature of their selective breeding and management. The foundation herd has served as a nursery for the Red Angus seedstock industry, and the genetic amplitude of this great herd has been a major force in the improvement of the Red Angus breed worldwide.

For this fourth Western Heritage sale, Blairs.Ag Cattle Co. offers the pick of one-half interest in the heifer calves born in 2018 OR you can pick one-half interest from their 2018 bull calves. As an added feature, you can double the hammer price for one-half interest in both the bull pick AND heifer pick.

This is an unprecedented opportunity to obtain a female or bull that is backed with years of the most comprehensive genetics in North America. The females and bulls that carry the Blairs.Ag Cattle Co. moniker have been in amazing demand when offered at auction. This 2018 heifer calf pick or 2018 bull pick is one of the most historic opportunities made available to the buying public. Endless possibilities accompany the individual selected to represent this sale lot.



**RED BLAIRS J6 JC CITA 860E**



**RED BLAIRS BONITA 179A**



**RED BLAIRS KASSIE 727D**



**RED BLAIRS RUST LARKABA 502D**



**RED BLAIRS KASSIE 49E**



14B

# PICK OF BLAIRS.AG CATTLE CO. BULL CALVES



RED BLAIRS BINGO 581B



RED BLAIRS KONGO 580D



RED BLAIRS GLADIATOR 541B



RED BLAIRS SIGNAL



RED BLAIRS PURE POWER 2B

See the  
Show String  
on the Hill



15

# PICK OF RUST MOUNTAIN VIEW RED ANGUS CALF CROP

OWNED BY: RUST MOUNTAIN VIEW

## ***Selling Pick of the entire 2018 Rust's Mountain View Ranch Red Angus Calf Crop***

Rust Mountain View will cover the cost of air travel and expenses to Bismarck, ND, for buyer to make selection.

Choose from the entire Red Angus calf crop—Bull or Heifer

Choose from 57 calves from embryo transfer and natural born calves

Calves born from late December, 2017 through June 15, 2018

Selection to be made by October 1, 2018

This is an outstanding opportunity to select from the very top of the progressive Red Angus breeding program at Rust's Mountain View Ranch. Only the very best have been selected across North America to add to the donor herd and herd sire battery. Over half of the calves are sired by Damar Trump C512, the Grand Champion Bull at the 2017 National Western Stock Show. The exclusive donor females represented include, Las Rojas Navarre 6054, the Reserve Grand Champion Female at the 2017 National Western Stock show.

Both the ET and natural calves are exceptional genetic combinations. The calf crop represents the best genetics ever produced by Rust's Mountain View Ranch.

**TERMS:** Half purchase price due sale day. Remaining half purchase price due when selection is made



BAR-E-L TOO TOO 218C



U2 DOLLY PYTHON 263B



TNTS MISS U147



NSFR MTX W14



DAMAR TRUMP C512



PZC TMAS FIRESTORM 1800ET

# See the Show String on the Hill



# PICK OF RUST MOUNTAIN VIEW RED ANGUS CALF CROP



ROJAS NAVARRE 6054



RED SOO LINE ANNIE 8192



U2 RENOWN



BKT LARKEISA M288



RED COCKBURN MS FANNY 191M



RUST MISS 329A

# 16

## PICK OF RHODES RED ANGUS RANCH 2018 HEIFER CALVES

OWNED BY: RHODES RED ANGUS RANCH

### **Choose one heifer calf from the entire Rhodes Red Angus Ranch 2018 calf crop**

Choose from approximately 70 heifer calves from natural and ET progeny

Calves will be born from February 15 through April 15, 2018

Selection to be completed by November 15, 2018

Jordan Rhodes of Rhodes Red Angus Ranch is a remarkably talented cattleman. He has gone about building a unique and resourceful Red Angus breeding program that ranks as one of the most comprehensive and inspiring groups of genetics within the breed. It was formed with females with impeccable records of fertility, flawless structure, the combination of the best in phenotype and genotype and selection of the best herd sires available. No exceptions. The results have been rewarding with the top bulls selected by some of the top breeders in the land. The calf crops are uniformly developed, attaining astounding weights with impressively balanced EPD trait statistics. From the 2018 calf crop, females will be born with unlimited potential and future earning power.

#### **TERMS:**

Half purchase price due sale day. Remaining half purchase price due when selection is made



**PIE UPFRONT 508**



**RREDS PIONEER 6904**



**PIE CINCH 4126**



**RREDS SENECA 731C**



**PIE THE COWBOY KIND 343**



**SILVEIRAS MISSION NEXUS 1378**



# PICK OF RHODES RED ANGUS RANCH 2018 HEIFER CALVES



BASIN PRIMROSE 0T43



BASIN PRIMROSE 4167



JD CATHY 859



RREDS TILLY 515C



CINCH x PRIMROSE 0T43



RRED FLOWERS 514C

# HEIFER PREGNANCY



**PZC TMAS FIRESTORM 1800 ET** • Sire of Lot 17



**DAMAR MIMI W085** • Dam of Lot 17

# 17

## SEXED HEIFER PREGNANCY

CAT: A • DUE 5/5/18

OWNED BY: POLZIN CATTLE

HB	GM	CD	BW	WW	YW	MK	HPG	CM	MB	YG	CW	RE
134	48	4	-0.9	53	82	21	14	12	0.17	0.01	18	-0.01

RED SIX MILE SAKIC 832S

**PZC TMAS FIRESTORM 1800 ET**

GT CITA 4060

RED FINE LINE MULBERRY 26P

**DAMAR MIMI W085**

DFRA TARMILY N512

RED SIX MILE AVIATOR 217P

RED SIX MILE SIERA 257P

CITATION 138

JMDF MISS LANA

RED COMPASS MULBERRY 449M

RED DUS FAYETTE 8G

BIEBER MAKE MIMI 7249

DFRA TARMILY N305

This mating of PZC TMAS Firestorm 1800 ET and Damar Mimi W085 has never been offered before. This is your opportunity to obtain a sexed heifer calf planned mating by and from two of the most highly acclaimed individuals within the Red Angus breed.

Damar Mimi W085 has been flushed to a menagerie of breeding bulls, and all have resulted in excellent results. This mating with the ever popular PZC TMAS Firestorm 1800 ET will result into a spectacular heifer calf suitable for major competition throughout the country. The heifer calf will be born in early May, and will be a perfect age for a show heifer—and certainly a breeding female of significance. The Western Heritage Sale offering is positively impacted by the influence of both PZC TMAS Firestorm W085 and DAMAR Mimi W085.

Tremendous earning power exists with this sexed heifer calf pregnancy offered by Polzin Cattle.



**DAMAR MIMI E381**

Maternal sib to Lot 17, Sells as Lot 2



**DAMAR BARCELONA E067**

Maternal sib to Lot 17, Sells as Lot 13





***Selling a flush opportunity guaranteeing six embryos. Buyer pays all cost, and receives up to 10 embryos, after which every other one is split. Flush to be performed by Dr. Tom Rea, CO. Flush to occur in mid February.***

Blockana 9148 is a proven donor of show winners and herd bulls, we are currently using two sons in our program. While at the ET center she has been admired by representatives of many breeds. 9148 was originally selected by the Wildcat Creek crew as pick out of the great, maternally strong Feddes Red Angus bred heifers. She was then a sale feature and the high-selling cow in the inaugural Wildcat Creek Female Sale. A rare, clean, direct daughter of the great Grand Canyon and backed by the proven Blockana cow family. A former herdsman of a large Red Angus ranch just walked through our pen of 150 heifer calves and his top two picks were 9148 daughters, and their flushmate will highlight our bull sale this spring. The possibilities are endless for this mating to create progeny that will have a lasting impact for years.

## 18 FEDDES BLOCKANA 9148

2/3/2009 • 1323084 • CAT: A • COW  
OWNED BY: OVERMILLER RED ANGUS

HB	GM	CD	BW	WW	YW	MK	HPG	CM	MB	YG	CW	RE
61	48	0	-0.6	56	88	33	14	6	0.19	-0.03	22	0.18

BUF CRK CHF 824-1658  
**LCHMN GRANDCANYON 1244G**  
KRN REBA'S ROBIN

HOLDEN HI HO 574  
**FEDDES BLOCKANA 173**  
FEDDES BLOCKANA 899

BUF CRK CHIEF092-824  
BFLO CRK CARIE VC473  
LMAN ROBIN HOOD 1174B  
KRN REBELLA 805/314  
BJR HI HO 916  
BECKTON EOLA 2025 CB  
LARSON RED LIGHTNING  
FED'S BLOCKANA 4231



Daughter of Lot 18

19

# PICK OF HERD FLUSH OF SIX MILE RED ANGUS

OWNED BY: SIX MILE RED ANGUS

We are selling ONE full flush on the buyer's female of choice OR the buyer can split two flushes with us, choosing two different females. Guaranteeing seven number one implantable embryos. The flush is to be done in Canada with all flush and embryo costs going to the buyer. If the buyer is located in the U.S., Six Mile will pay the costs of shipping and exporting the embryos to the U.S. All other costs assumed by the buyer. The flush must be done by June 1, 2018, with the choice of female made by the end of April.

Six Mile Red Angus has been in the Red Angus breed since 1968. Since the very beginning, our program has been "Focused on the Female" and we believe in the power of cow families. The Six Mile Red Angus cow herd numbers around 500 head—giving the buyer ample opportunity and variation of choice. The recent accusation of females from the Bar-E-L Red Angus herd dispersal in Canada, has added even more genetic opportunity. Your choices include many National Champion females, dams of Denver Champion bulls and countless high-selling females. We have many up-and-coming young females, along with proven mother cows. Cows that have proven themselves on the range and in the sale and show ring.



BAR-E-L FRADO 209U



RED SIX MILE GLORIA 195B



RED SIX MILE ENID 878W



RED SIX MILE LAKOTO 35W

Our recent Genetic Focus Sale in December 2017 averaged more than \$17,000 per female and our bull sale sees high demand for our range produced bulls. This is a testament to the kind of females offered here.

As an added bonus, we will open our semen tank to the new buyer to complete the flush. This will include an opportunity to tap into many high dollar, exclusive sires that are not available otherwise. Sires such as Signature, High Caliber, Reform, Game Face, New Era, Reckoning and Indeed.

Please Note: Some partnership females may not be available as a choice.

See the  
Show String  
on the Hill



19

# PICK OF HERD FLUSH OF SIX MILE RED ANGUS



RED SIX MILE LASSIE 377P



RED SIX MILE MARTA 238C



RED SIX MILE MARTA 300Y



RED SIX MILE SHAWNEE 116T



RED SIX MILE TAFFETTA 142B

See the  
Show String  
on the Hill



20

# PICK OF HERD FLUSH OF ARROWSMITH RED ANGUS

OWNED BY: ARROWSMITH RED ANGUS

The Arrowsmith Red Angus breeding program began in 1994 when Brad purchased his first Red Angus female. Before that, Red Angus bulls had been used on the existing Hereford cow herd, and the influence of the Red Angus genetics on the commercial cow herd encouraged Brad Arrowsmith to pursue breeding Red Angus seedstock. Since the initial movement toward breeding Red Angus breeding stock, The Arrowsmith brand of excellence has been a part of all decision making. From purchases to selection, from performance traits to maternal background, from freshness of pedigree to durability of proven lines, Brad Arrowsmith is constantly striving to improve. His goals of a herd of Red Angus females that excel in phenotype, soundness, udder quality, longevity and outcross lineage has become a reality. The herd ranks as one of the greatest breeding herds in North America.



RED SSS DUCHESS 140B



RED SSS DUCHESS 142B



RED SSS NELLIE 143B



RED SSS GOLDEDGE 206B



RED SSS STOCKY 249B





# PICK OF ARROWSMITH HERD FLUSH

- Select one flush from one female or half of two flushes from two females
- One-half purchase price down at sale time
- One-half when embryos are received
- Buyers supplies semen
- All Arrowsmith herd sires are available at no cost to the buyer
- All cost of the flush are covered by the hammer price
- The flush will be conducted under the supervision of Brad Arrowsmith



**RED SSS LARKABELLE 616A**



**RED SSS MAXZEEN 694A**



**RED SSS TACTIC 651D**



**RED SSS LYDA 265B**



**RED SSS ELBA 115B**



**RED FLYING K MAX 159Y**



**RED SSS ENDORSE 639X**



## FALL PAIRS



### 21 PIE LASA 5173

3/3/2015 • 3503463 • CAT: A • COW  
OWNED BY: ENGLEWOOD FARMS

HB	GM	CD	BW	WW	YW	MK	HPG	CM	MB	YG	CW	RE
86	47	2	1.6	64	88	14	12	6	0.22	-0.14	24	0.27

SIX MILE TIMBERLAKE 180T  
**LSF TBJ LUMBERJACK 2801Z**  
SRR LAKOTA 0123-027

TPIE WAGONMASTER 753  
**PIE LASA 2287**  
PIE LASA 5102

RED TOWAW INDEED 104H  
RED SHODEREE ECHETA 193N  
PAR ULTIMATE DIRECTION 1018R  
GMRA LAKOTA 027  
PIE GRIDMASTER 589  
BASIN ENCHANTRESS 1902  
PERKS ADVANCE 121R  
PIE LASA CAN 122

AI'd 11/16/17 to AHL Flashback 446B

**LOT 21A:** 9/12/17 bull calf by AHL Flashback 446B. Tatoo, ENG 7423E, BW: 70 lbs.

PIE Lasa 5173 is a young female with her first calf by Flashback. The daughter of LSF TBJ Lumberjack 2801Z is a complete individual and she will be a sound female investment for years to come. Her bull calf at side has great potential.



### 22 DAMAR FIRST LADY 4405P B110

1/10/2014 • 1680393 • CAT: A • COW  
OWNED BY: ENGLEWOOD FARMS

HB	GM	CD	BW	WW	YW	MK	HPG	CM	MB	YG	CW	RE
95	51	6	-3.6	61	98	33	13	5	0.44	0.08	23	0.08

BECKTON JULIAN GG B571  
**HXC CONQUEST 4405P**  
HXC ELLIE MAY MA638

LCHMN GOLD ROBBER 1909E  
**DAMAR FIRST LADY W012**  
BHC GRAND LADY

BKT JULIAN 7526 G  
BKT MARTA 9A13 JL  
BFCK CHEROKEE CNYN 4912  
HXC 529E  
LMAN KING ROB 8621  
LEACHMAN LARKABA 6384  
LCHMN GRANDCANYON 1244G  
BHC FANCY LADY

AI'd 11/16/17 to AHL Flashback 446B

**LOT 22A:** 9/1/17 bull calf by AHL Flashback 446B. Tatoo, ENG 7407E, BW: 70 lbs.

Damar First Lady 4405P B110 is a young daughter of HXC Conquest 4405P. She traces to some of the best female lines in the business. She has a promising bull calf at side by Flashback.

**AHL FLASHBACK 446B**

Sire of Lots 21A, 21B, 21C



### 23 RHODES AMBER 229A

9/22/2013 • 1652664 • CAT: A • COW  
OWNED BY: ENGLEWOOD FARMS

HB	GM	CD	BW	WW	YW	MK	HPG	CM	MB	YG	CW	RE
163	48	7	-0.2	65	90	16	10	4	0.45	0.07	23	0.01

BUF CRK LANCER R017  
**MUSHRUSH IMPRESSIVE X027**  
MUSHRUSH MADAM LT R038

BECKTON NEBULA M045  
**BUF CRK AMBER W099**  
BUF CRK AMBER M023

BECKTON LANCER F442 T  
BUF CRK JULIET N036  
TR JULIAN LT142  
MUSHRUSH MADAM N086  
BECKTON NEPTUNE R2 K065  
BECKTON BELGA K285 JL  
GLACIER MARIAS 548  
BUF CRK AMBER 3912

**LOT 23A:** 9/1/17 bull calf by AHL Flashback 446B. Tatoo, ENG 7408E, BW: 70 lbs.

Rhodes Amber 229A is a solid daughter of Mushrush Impressive with a bull calf at side by Flashback. She is one of three excellent lots from the Englewood Farms program.





***Selling Three embryos with a guarantee of One pregnancy if implanted by a certified embryologist.***

ORT Charlotte is a donor matron that is truly one-of-a-kind. You will not find another female in the Red Angus breed that possesses the combination of performance, mass, volume, structural correctness, pedigree and EPD profile this cow does. She has proven herself to be truly remarkable as a natural dam and donor female. We believe this is one of the breed's true treasures. Charlotte follows the type and kind of her amazing dam, Red Six Mile Lana 0917W, who also produced a flushmate to Charlotte, ORT Ice Cold 6013. He sold to Rohrich's Cutting Edge Ranch in South Dakota for \$13,000.

Not only has Charlotte excelled in performance, fertility, and maternal excellence, her show career also speaks for itself. She was named Grand Champion Female at the 2014 State Fair of Texas in the Junior and Bred-and-Owned Show. She was also crowned Grand Champion at the 2015 Fort Worth Junior Show and Reserve Champion Bred and Owned Cow/Calf Pair at the 2017 NAJRAE while nursing twin bull calves.

The sire of the embryos, Red DKF Razor 55C, is making his mark. He sires stout, deep-middled cattle that are sharp profiling and sound structured. His pedigree stacks four generations of black animals highlighted by S A V Eliminator 9105 and S A V Net Worth 4200. His EPD profile boasts a top 7% WW, top 2% YW, top 8% REA, and top 1% MARB.

The decision to part with these embryos has not been taken lightly. We are offering this rare opportunity as the first embryos out of 3,003 to be sold at public auction.

The potential of this mating is unprecedented. The fusion of pedigree, performance, EPDs, and phenotype will prove to be a sale highlight of 2018.

## 24 THREE EMBRYOS

CAT: A  
OWNED BY: T5 CATTLE CO.

HB	GM	CD	BW	WW	YW	MK	HPG	CM	MB	YG	CW	RE
75	51	4	0.0	71	113	21	11	8	0.57	0.08	37	0.12

DKF ELIMINATOR 15A

**RED DKF RAZOR 55C**

DKF MISS NEW WORTH 21A

RED LAZY LOOKOUT 153X

**ORT CHARLOTTE 3003**

RED SIX MILE LANA 0917W

S A V ELIMINATOR 9105

RED DKF MISS POWER 17P

S A V NET WORTH 4200

DKF MISS POWER UP 95X

LAZY MC LOOKOUT 37U

RED LAZY MC GOLD DESIGN 84U

RED SIX MILE SAKIC 832S

RED SIX MILE LANA 733L



**RED DKF RAZOR 55C**

Sire of Lot 24



**ORT BARRETT 50**

Maternal sib to Lot 24



**SIX MILE WIND CHIME 689D** • Daughter of Lot 25 Dam

## 25A THREE EMBRYOS

CAT: A

OWNED BY: SIX MILE RANCH • NIOBRARA RED ANGUS

HB	GM	CD	BW	WW	YW	MK	HPG	CM	MB	YG	CW	RE
105	48	3	-0.6	56	85	20	9	4	0.22	-0.07	20	0.16

RED U-2 RECON 192Y  
**RED U-2 RECKONING 149A**  
 RED U-2 ANEXA 271Y

RED SIX MILE RUGER 221X  
**SIX MILE WIND CHIME 634B**  
 RED SIX MILE WIND CHIME 769W

RED U2 MISSION 61W  
 RED U-2 LARKABA 8133U  
 RED HOWE MAGNUM 169W  
 RED U-2 ANEXA 333N  
 RED SIX MILE ULTIMATUM 409U  
 RED SIX MILE SHAWNEE 116T  
 LCHMN RED SPREAD 1271F  
 RED SIX MILE MS. UMPIRE 279P



**RED U-2 RECKONING 149A** • Sire of Lot 25A

## 25B THREE EMBRYOS

CAT: A

OWNED BY: SIX MILE RANCH • NIOBRARA RED ANGUS

HB	GM	CD	BW	WW	YW	MK	HPG	CM	MB	YG	CW	RE
82	49	3	0.2	68	107	20	10	5	0.29	-0.05	34	0.33

MRLA 53W  
**MRLA NEW ERA 87Y**  
 RED MRLA MISS 845S

RED SIX MILE RUGER 221X  
**SIX MILE WIND CHIME 634B**  
 RED SIX MILE WIND CHIME 769W

S A V NET WORTH 4200  
 RED BROX MS CHEROKEE 13N  
 RED SODER CANYON 126M  
 RED NORTH PEACE 11N  
 RED SIX MILE ULTIMATUM 409U  
 RED SIX MILE SHAWNEE 116T  
 LCHMN RED SPREAD 1271F  
 RED SIX MILE MS. UMPIRE 279P



**MRLA NEW ERA 87Y** • Sire of Lot 25B

Wind Chime is a young up-and-coming female in the Six Mile herd. She is a moderate-framed, big-bodied, proven-producing female. Her first daughter was recently crowned Reserve Grand Champion Female at the Canadian Western Agribition. She is also the reigning Canadian National Reserve Champion Female. Her 2017 bull calf by Reckoning will be a highlight in the Six Mile Ranch bull sale.

The Lot A embryos are full siblings to this bull calf. Reckoning semen is not currently on the open market.

The Lot B embryos are by New Era 87Y who was the Denver Reserve Grand Champion Bull. We lost him prematurely, leaving his full potential unrealized.

Either sire choice will surely take your Red Angus program to a new level with fresh new genetics.

***Selling Three embryos with a guarantee of One pregnancy if implanted by a certified embryologist.***





**DAMAR TRUMP C512** • Sire of Lot 26A



**KJHT POWER TAKE OFF** • Sire of 26B



**RED BLAIRS BINGO 581B** • Sire of Lot 26C

## 26A FOUR EMBRYOS

CAT: A

OWNED BY: NIOBRARA RED ANGUS

HB	GM	CD	BW	WW	YW	MK	HPG	CM	MB	YG	CW	RE
103	48	2	0.0	52	81	17	13	7	0.45	0.12	19	-0.18

RED SOO LINE POWER EYE 161X

**DAMAR TRUMP C512**

DAMAR OH BABY W168

RED SSS SOLDIER 365W

**RED SSS JESSIE 261Z**

RED SSS JESSIE 654X

RED COCKBURN RIBEYE 308U

RED TR LYNN 301R

RED FINE LINE MULBERRY 26P

RED T-S OLIVIA 706P

RED SVR KNIGHT 236T

RED SSS BELLE 342S

RED BRYLOR BIG ROCK 85T

RED SSS JESSIE 112R

## 26B FOUR EMBRYOS

CAT: A

OWNED BY: NIOBRARA RED ANGUS

HB	GM	CD	BW	WW	YW	MK	HPG	CM	MB	YG	CW	RE
107	48	4	-1.0	50	76	17	13	6	0.36	0.07	14	-0.07

RED SOO LINE POWER EYE 161X

**KJHT POWER TAKE OFF**

SRA PAINTBUCKET

RED SSS SOLDIER 365W

**RED SSS JESSIE 261Z**

RED SSS JESSIE 654X

RED COCKBURN RIBEYE 308U

RED TR LYNN 301R

RED NORTHLINE FAT TONY 605U

SRA PICABO PROMISE

RED SVR KNIGHT 236T

RED SSS BELLE 342S

RED BRYLOR BIG ROCK 85T

RED SSS JESSIE 112R

## 26C FOUR EMBRYOS

CAT: A

OWNED BY: NIOBRARA RED ANGUS

HB	GM	CD	BW	WW	YW	MK	HPG	CM	MB	YG	CW	RE
105	47	3	0.0	56	80	16	13	7	0.38	0.06	17	-0.04

RED RINGSTEAD KARGO 215U

**RED BLAIRS BINGO 581B**

WSF MS YANKEE 13T 12W

RED SSS SOLDIER 365W

**RED SSS JESSIE 261Z**

RED SSS JESSIE 654X

RED RINGSTEAD KARGO 107M

RED RINGSTEAD MS EQUAL 589P

RED BRYLOR/WSP KARWEIK

FINE LINE YANKEE 13T

RED SVR KNIGHT 236T

RED SSS BELLE 342S

RED BRYLOR BIG ROCK 85T

RED SSS JESSIE 112R

***Selling Four embryos with a guarantee of Two pregnancies if implanted by a certified embryologist.***

Red SSS Jessie 261Z was the \$40,000 Triple S Pick of the cow herd purchased by Niobrara Red Angus and Blair.Ag Cattle Co. This powerful daughter of SSS Soldier 365W is one of the most impressive females in the entire breed. The big bodied female is perfect in her structure and movement, and she carries her heavy frame and body effortlessly with her sound feet and leg placement. She is destined to write some of the most exciting chapters of Red Angus history for years and years to come. The SSS Soldier 365W daughter has emerged as one of the breeding sire's best daughters. Maternally, Red SSS Jessie 261Z is from the SSS Jessie family lineage, originating and perfected in the SSS breeding herd.

Three different embryo packages by three different sires offer new and exciting genetic combinations to the embryo line-up in the Western Heritage Sale. The 2017 National Western Grand Champion Bull, Damar Trump CC512, the 2016 North American International Livestock Show Reserve Grand Champion Bull, KJHT Power Take Off, and the popular Red Blair's Bingo 581B, make this a powerful embryo offering from Niobrara Red Angus.



## 27 FIVE EMBRYOS

CAT: A

OWNED BY: POLZIN CATTLE

LJC MISSION STATEMENT P27

**SILVEIRAS MISSION NEXUS 1378**

SILVEIRAS DAORV 8399

RED LAZY MC HUSTLE 18T

**RED COCKBURN CORA 254Z**

RED WILBAR CORA 443P

LJC LANCER 806

LJC HANNAH 106

TROTTERS ROMEO 412

MOORE'S DAORV 5365

LAZY MC BOOM 44R

RED LAZY MC LARKABA 70R

RED TER-RON TORNADO 157M

RED HEAD CORA 159L



**SILVEIRAS MISSION NEXUS 1378** • Sire of Lot 27



**RED COCKBURN ASSASSIN 624D** • Son of Lot 27



**RED COCKBURN CORA 501C** • Daughter of Lot 31B

Red Cockburn Cora 254Z is the \$20,000 half interest female that was one of the high-selling lots in the Pinnacle Sale this summer. Polzin Cattle made the purchase, and the genetic combination with Silveiras Mission Nexus 1378 is a headliner embryo lot in the Western Heritage Sale.

Red Cockburn Cora 254Z is the dam of the \$77,500 high-selling bull in last year's Cockburn Red Angus Bull Sale and was purchased by Brylor Ranch. This high maternal female has an excellent career in store, and a portion of that future is shared by Polzin Cattle in the form of these embryos. Red Cockburn Cora 254Z is a maternal sister of Ribeye 308U, and this family lineage has and will continue to contribute significantly to the genetic progress of the Red Angus gene pool.

***Selling Five embryos with a guarantee of Two pregnancies if implanted by a certified embryologist.***





## 28A FOUR EMBRYOS

CAT: A

OWNED BY: COCKBURN RED ANGUS

HB	GM	CD	BW	WW	YW	MK	HPG	CM	MB	YG	CW	RE
88	47	1	0.1	60	87	14	10	3	0.21	0.02	21	-0.05

RED SSS BREAK OUT 114Y

**RED COCKBURN HEAVY DUTY 518C**

RED COCKBURN QUEEN 340U

RED BAR-E-L RIBEYE 103R

**RED COCKBURN CORA 133Y**

RED WILBAR CORA 443P

PIE GAME ON 9109

RED SSS DUCHESS 23R

RED BAR-E-L RIBEYE 103R

RED COCKBURN MS QUEEN 78G

RED TER-RON DIGGER 11L

RED BAR-E-L MARCIE 50N

RED TER-RON TORNADO 157M

RED HEAD CORA 159L



**RED COCKBURN HEAVY DUTY 518C** • Sire of Lot 28A

## 28B FOUR EMBRYOS

CAT: A

OWNED BY: COCKBURN RED ANGUS

HB	GM	CD	BW	WW	YW	MK	HPG	CM	MB	YG	CW	RE
125	49	6	-2.9	58	90	21	12	5	0.23	0.06	19	-0.20

LSF SAGA 1040Y

**PIE SPECIALIST 430**

PIE PLAYMATE 232

RED BAR-E-L RIBEYE 103R

**RED COCKBURN CORA 133Y**

RED WILBAR CORA 443P

BECKTON EPIC R397 K

LSF MINOLA T7172 W9041

PIE CODE RED 9058

PIE PLAYMATE 028

RED TER-RON DIGGER 11L

RED BAR-E-L MARCIE 50N

RED TER-RON TORNADO 157M

RED HEAD CORA 159L



**PIE SPECIALIST 430** • Sire of Lot 28B

***Selling Four embryos with a guarantee of Two pregnancies if implanted by a certified embryologist.***

selling as Lot 27. The full and maternal sisters of Red Cockburn Cora 133Y are an impressive group, and they make up the genetic core of the Cockburn breeding herd. Red Cockburn Cora 133Y is a daughter of Red Fine Line Mulberry 26P from the pillar foundation female, Red Wilbar Cora 443P. Two different genetic combinations of embryos are offered here from Red Cockburn Cora 133Y.

Red Cockburn Heavy Duty 518C was the former high-selling bull in the Cockburn Bull Sale, and he is now owned with Eagle Pass Ranch and Rainbow Red Angus. Red Pie Specialist 430 is the popular calving-ease son of Red LSF SAGA 1040Y. Both are popular genetic combinations, and both sets will make a remarkable impact on the industry.

Red Cockburn Cora 133Y is an attractive donor female in the Cockburn Red Angus breeding program. She is a from the Cora line of breeding females that produced Cockburn Ribeye 308U. Furthermore, she is a maternal sister of Red Cockburn Cora 254Z, the donor dam of the embryos



*Danny Bradshaw*

**BROWN MS ABIGRACE L7730**

The original Abigrace matron.



**SILVEIRAS MISSION NEXUS 1378** • Sire of Lot 29A



**MAJESTIC LION HEART A25** • Sire of Lot 29B

***Selling Three IVF Reverse-Sorted female embryos  
with a guarantee of One pregnancy  
if implanted by a certified embryologist.***

The genetics offered with this embryo lot from Majestic Meadows combines many pertinent breeding aspects of Red Angus seedstock propagation. C Bar Abigrace 266Z is one of the most eye appealing and fertile of the entire Abigrace line of females. She represents the refined and perfected lineage that has become such a dominant force within the industry. The phenotype of this great female eclipses many that trace to the common foundation female. Furthermore, the genotype and EPD tabulation combine to make a overpowering complete genetic package.

## 29A THREE SEXED EMBRYOS

CAT: A

OWNED BY: MAJESTIC MEADOWS

HB	GM	CD	BW	WW	YW	MK	HPG	CM	MB	YG	CW	RE
96	50	2	-0.3	71	114	17	12	3	0.24	-0.10	37	0.56

LJC MISSION STATEMENT P27

**SILVEIRAS MISSION NEXUS 1378**

SILVEIRAS DAORV 8399

RED LAZY MC COWBOY CUT 26U

**C-BAR ABIGRACE 266Z**

C-BROWN&KM ABIGRACE T715

LJC LANCER 806

LJC HANNAH 106

TROTTERS ROMEO 412

MOORE'S DAORV 5365

RED LAZY MC STOUT 30S

RED LAZY MC STAR 185M

LJC MISSION STATEMENT P27

BROWN MS ABIGRACE P7905

## 29B THREE SEXED EMBRYOS

CAT: A

OWNED BY: MAJESTIC MEADOWS

HB	GM	CD	BW	WW	YW	MK	HPG	CM	MB	YG	CW	RE
54	48	-1	1.3	66	101	18	12	4	0.17	0.05	32	0.09

MAJESTIC LIGHTNING 717 SGMR

**MAJESTIC LION HEART A25**

MAJESTIC MS. ADVANCER R115

RED LAZY MC COWBOY CUT 26U

**C-BAR ABIGRACE 266Z**

C-BROWN&KM ABIGRACE T715

WHITESTONE CAYENNE 423R

WHITESTONE BLOCKANNA R227

4L SUPER VISION R2292

MS ADVANCER OF 4L RM30

RED LAZY MC STOUT 30S

RED LAZY MC STAR 185M

LJC MISSION STATEMENT P27

BROWN MS ABIGRACE P7905

Silveiras Mission Nexus and Majestic Lion Heart add impressive blood to the foundation donor female. Countless genetic options are made available through these two intriguing genetic combinations.





## 30A THREE NON-SEXED IVF EMBRYOS

CAT: A

OWNED BY: MAJESTIC MEADOWS

HB	GM	CD	BW	WW	YW	MK	HPG	CM	MB	YG	CW	RE
71	49	2	-0.3	63	97	19	8	0	0.41	0.00	27	0.13

SIX MILE GAME FACE 164Y

**SIX MILE TAURUS 519A**

RED SIX MILE SHAWNEE 116T

PERKS ADVANCER 9088

**MAJESTIC BLOCKANNA 728 SGMR**

MAJESTIC BLOCKANNA 715

VGW GAME PLAN 816

RED SIX MILE LAKOTO 35W

5L NORSEMAN KING 2291

RED CROWFOOT SHAWNEE 9124J

RBJR ADVANCE A709

HMV MS RAMBO 502

LCC MAJOR LEAGUE A502M

WHITESTONE BLOCKANNA R227



**SIX MILE TAURUS 519A** • Sire of Lot 30A



**RED LAZY TROOPER 21Y** • Sire of Lot 30B

## 30B THREE NON-SEXED IVF EMBRYOS

CAT: A

OWNED BY: MAJESTIC MEADOWS

HB	GM	CD	BW	WW	YW	MK	HPG	CM	MB	YG	CW	RE
76	50	2	-0.4	61	102	24	11	2	0.32	-0.06	31	0.36

RED SSS SOLDIER 365W

**RED LAZY MC TROOPER 21Y**

LAZY MC EXPRESS 60W

PERKS ADVANCER 9088

**MAJESTIC BLOCKANNA 728 SGMR**

MAJESTIC BLOCKANNA 715

RED SVR KNIGHT 236T

RED SSS BELLE 342S

RED RMJ REDMAN 1T

STEWART EXPRESS 304N

RBJR ADVANCE A709

HMV MS RAMBO 502

LCC MAJOR LEAGUE A502M

WHITESTONE BLOCKANNA R227

***Selling Three embryos with a guarantee of One pregnancy if implanted by a certified embryologist.***

Majestic Blockana 728 has been one of the foundation donor females in the Majestic Meadows donor program. The successful show heifer became an unsurpassed donor female of exceptional accomplishments and genetic merit. The Blockana line of females

has been a remarkable source of quality as the breed has grown and increased in critical mass among all registered seedstock. Championship seedstock is offered through the highest level with the two sets of embryos from Majestic Blockana 728. The donor dam is the former Grand Champion Female at the NAILE. Six Mile Taurus 519A is the former two-time National Western Stock Show Grand Champion Bull, and Red Lazy MC Trooper 21Y, is the former National Champion Bull at the Fort Worth Stock Show. Elite and transformative genetics are offered with this embryo lot.

## 31A FOUR EMBRYOS

CAT: A

OWNED BY: TWIN WILLOW FARMS

HB	GM	CD	BW	WW	YW	MK	HPG	CM	MB	YG	CW	RE
100	46	4	-0.5	56	75	17	10	11	0.12	0.00	13	-0.06

RED RINGSTEAD KARGO 215U

**RED BLAIRS BINGO 581B**

WSF MS YANKEE 13T 12W

RED SIX MILE AVIATOR 217P

**C-BAR SIERA Y27**

RED SIX MILE SIERA 257P

RED RINGSTEAD KARGO 107M

RED RINGSTEAD MS EQUAL 589P

RED BRYLOR/WSP KARWEIK

FINE LINE YANKEE 13T

RED WILDMAN DENALI 19L

RED RSL SUE 400F

RED SIX MILE CUJO 800M

RED BOUNTY B MISS SIERA BAR

***Selling Four embryos  
with a guarantee of Two  
pregnancies if implanted by  
a certified embryologist.***

***Offering embryos out of a full sister to  
Red Six Mile Sakic 823S.***

C-Bar Siera Y2F is the newest addition to the Twin Willow Farms breeding program. The donor female is the full sister to Red Six Mile Sakic 823S, and she greatly influenced the Rust's Mountain View ET program for both Red Angus and Sim Angus genetics, alike. The highly fertile female is a constant source of the highest quality genetics. The sound and attractive female has a perfectly attached udder, and the never failing genetic influence from this great cow will contribute to the industry for years to come.

Two different genetic combinations from this donor female are offered in this Western Heritage Sale. The influence of Red Blair's Bingo 581B and Red Soo Line Power Eye 161X contribute to the genetic profile of this donor cow family.

## 31B FOUR EMBRYOS

CAT: A

OWNED BY: TWIN WILLOW FARMS

HB	GM	CD	BW	WW	YW	MK	HPG	CM	MB	YG	CW	RE
102	47	5	-1.4	55	83	14	11	10	0.10	0.10	17	-0.34

RED COCKBURN RIBEYE 308U

**RED SOO LINE POWER EYE 161X**

RED TR LYNN 301R

RED SIX MILE AVIATOR 217P

**C-BAR SIERA Y27**

RED SIX MILE SIERA 257P

RED BAR-E-L RIBEYE 103R

RED WILBAR CORA 443P

RED GEIS KNIGHT HAWK 14'02

TR LYNN 105L

RED WILDMAN DENALI 19L

RED RSL SUE 400F

RED SIX MILE CUJO 800M

RED BOUNTY B MISS SIERA BAR



**RED BLAIRS BINGO 581B • Sire of Lot 31A**



**RED SOO LINE POWER EYE 161X • Sire of Lot 31B**





## 32 FOUR EMBRYOS

CAT: A  
OWNED BY: SATTERFIELD ANGUS

HB	GM	CD	BW	WW	YW	MK	HPG	CM	MB	YG	CW	RE
87	49	2	0.5	67	94	16	13	2	0.63	-0.07	26	0.29

***Selling Four embryos  
with a guarantee of Two  
pregnancy if implanted by  
a certified embryologist.***

A-1 Yuma 560Y is one of the superior donor females in the Satterfield Angus group of elite breeding females. The daughter of HXC Jackhammer 8800U has made a phenomenal impact upon the Satterfield ET program, and WPRA Legacy A314 progeny are on the ground and all look exceptional. This female stamps her progeny with standout profiles and distinguishing images. She transmits the excellence that has been a part of the genetic lineage of the entire cow family. The mating of the embryos that sell here are a proven product with the guesswork eliminated.

RED LAZY MC EYE SPY 64Y  
**WPRA LEGACY A-314**  
WPRA EVERLEDA ENTENSE 610  
  
HXC JACKHAMMER 8800U  
**A-1 YUMA 560Y**  
RED SIX MILE LANA 794S

LAZY MC LOOKOUT 37U  
RED LAZY MC GOLD DESIGN 68U  
BFCK CHEROKEE CNYN 4912  
ER EVERLEDA ENTENSE P578  
HXC HEMI 4400P  
HXC JOLENE 301N  
RED BRYLOR NEW TREND 22  
RED SIX MILE LANA 202P



**WPRA LEGACY A-314 • Sire of Lot 32**



## 33 THREE EMBRYOS

CAT: A

OWNED BY: GLENDENNING J BAR J RANCH

HB	GM	CD	BW	WW	YW	MK	HPG	CM	MB	YG	CW	RE
89	49	3	-1.5	65	94	20	11	0	0.20	-0.15	24	0.48

LJC MISSION STATEMENT P27

**SILVEIRAS MISSION NEXUS 1378**

SILVEIRAS DAORV 8399

RED U-2 BIG LEAGUE 544R

**RED U2 LASS 330W**

RED FLYING K LASS 178N

LJC LANCER 806

LJC HANNAH 106

TROTTERS ROMEO 412

MOORE'S DAORV 5365

LCC MAJOR LEAGUE A502M

RED U-2 ANEXA 09E

SCHR DAKOTA CHIEF 4K

RED FLYING K MS EXECUTIVE 65

***Selling Three embryos  
with a guarantee of One  
pregnancy if implanted by  
a certified embryologist.***

U2 Lass 330W is one of the exceptional daughters of U2 Big League 544R in the United States. She is a beautifully designed female with ample body and symmetry. The dark red female stands on significant circumference of bone, and she is a proven, producing female of high quality seedstock that has been well received at auction both in the United States and Canada. Her son by TR Rolls Royce 44B is a herd sire in the Double A breeding herd. The embryos by Silveiras Mission Nexus offers more excitement to this prominent family line offered from the Glendenning J Bar J breeding program.

**J BAR J DEEP WATER 601D**

Maternal sib to Lot 33

**SILVEIRAS MISSION NEXUS 1378**

Sire of Lot 33







It goes without saying that the genetic influence of AHL Flashback 446B is adding tremendous value to the Red Angus population throughout North America.

The consistency of the progeny by the 2014 NAILE Grand Champion Bull is fueling his popularity as one of the most respected breeding bulls in the industry. They are stamped with his pleasing profile, are big-topped, big-boned and pacing the industry for actual performance. Through his outstanding progeny, this herd sire is making a major impact in sale and show rings throughout North America.

AHL Flashback 446B made his way to Smoky Y Ranch following the Englewood Dispersal who in turn, acquired him at the 2015 Western Heritage Sale where he sold for \$102,000.

His sire, the deceased PZCTMAS Firestorm 1800 ET, is one of the dominant breeding sires in the history of the Red Angus breed.

His dam, AHL Duchess 42W, is the \$72,000 female who topped a previous Power Forward Sale. She currently serves as a prolific donor for the Steve Nathanson family.

This serves as a unique opportunity to acquire direct genetic access to one of the greatest breeding bulls of any breed.

## 34 AHL FLASHBACK 446B

2/6/2014 • 1667094 • CAT: A • BULL

OFFERED BY: ENGLEWOOD FARMS

HB	GM	CD	BW	WW	YW	MK	HPG	CM	MB	YG	CW	RE
65	48	3	-1.0	68	98	21	10	8	.23	.09	26	-.16

RED SIX MILE SAKIC 832S

**PZCTMAS FIRESTORM 1800 ET**

GT CITA 4060

PIE GET WESTERN 4061

**AHL DUCHESS 42W**

AHL DUCHESS 106P

RED SIX MILE AVIATOR 217P

RED SIX MILE SIERA 257P

CITATION 138

JMDF MISS LANA

PIE ATLANTIC 2204

PIE M.S. CADSAM 8192

LCC CHARITY A183M

AHL DUCHESS MB019



**AHL FLASHBACK 446B**



**AHL DUCHESS 42W**

Dam of Lot 34

34A 10 UNITS OF SEMEN

34B 10 UNITS OF SEMEN

34C 10 UNITS OF SEMEN









# RED RIGHT. NOW.

*An independent university study compared six years of Superior Livestock Auction data, revealing Red Angus-sired heifers commanded from \$5 to \$9/cwt. more than females of all other breed types.*

*Learn more about the value of Red Angus-sired replacement females at*  
**redangus.org.**

*The Red Angus female is the rancher favorite for replacements that deliver real profitability.*

**Ranch Tested. Rancher Trusted.**

## **Red Angus**

# On The Hill

